



IMPORTATION AND CUSTOMS CLEARANCE TOGETHER !

**Facilitating importation and Customs
clearance of relief items during disease outbreaks**

Help Logistics - IFRC - World Customs Organization - International Humanitarian City – ITU –
MSF Belgium - OCHA – Save the Children – UNCTAD – WHO

1. ROLE OF CUSTOMS

Role of Customs:

- Protect borders from illegal traffic and smuggling activities, including counterfeit medical supplies
- Ensure the speedy and efficient importation of relief goods



2. PREPAREDNESS ACTIVITIES

Advocacy:

- Ratify international conventions and adopt national legal framework
- Enhance information sharing of Customs procedures for humanitarian settings
- Provide capacity building support to Customs Administrations
- Strengthen collaboration and coordination at national and regional level

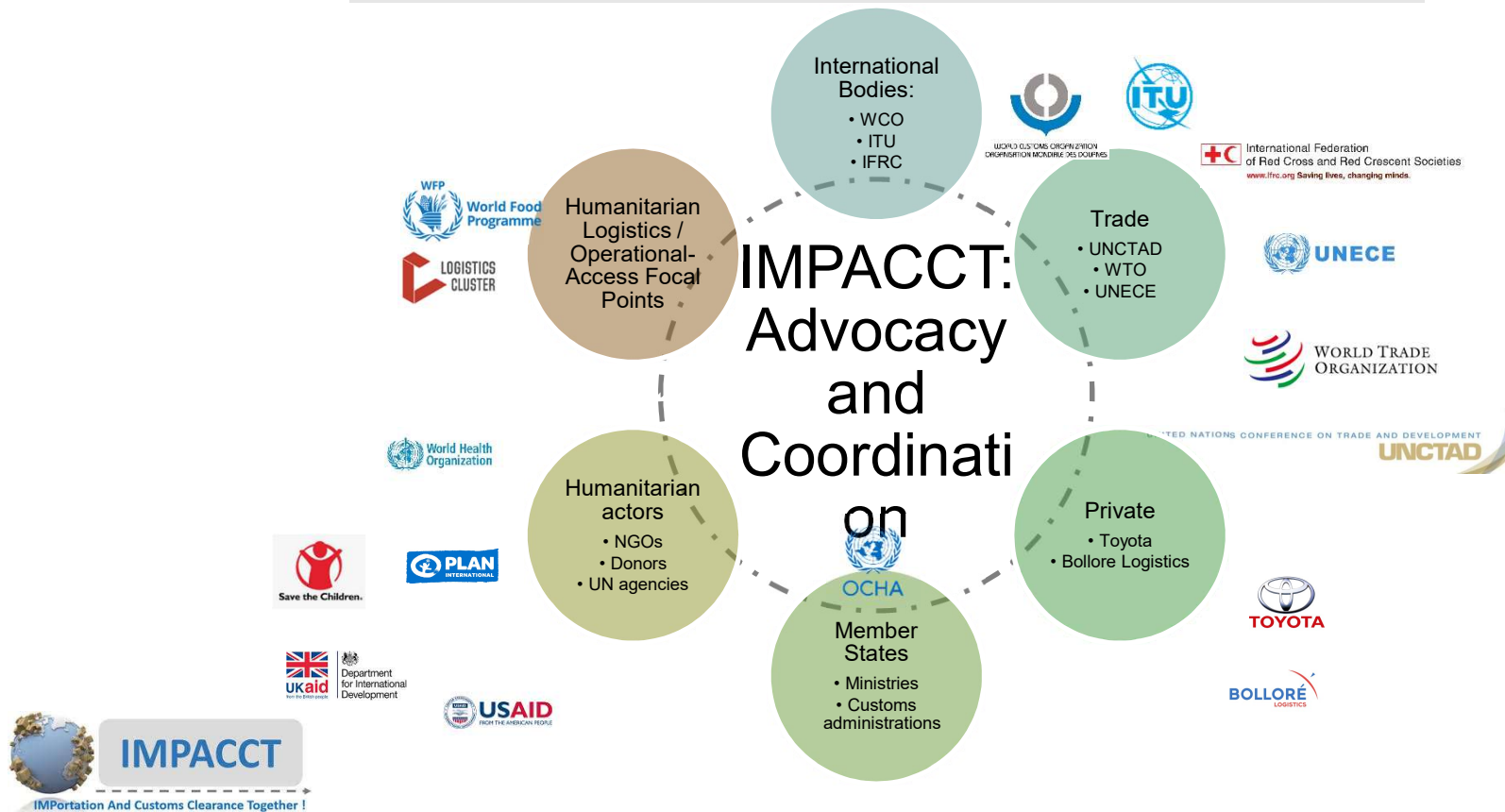
Objectives:

Minimize bureaucratic Customs access impediments

Enable rapid humanitarian response



IMPORTATION OF HUMANITARIAN RELIEF: WHO IS INVOLVED?



www.wcoomd.org

The screenshot shows the WCO website with the following elements:

- Header:** WCO logo, "World Customs Organization / Organisation Mondiale des Douanes", language selector (English - English), and links for Sitemap, Contact Us, RSS feeds, and FAQ.
- Navigation Bar:** Home, ABOUT US, MEDIA, ONLINE SERVICES, TOPICS, EVENTS, MEETINGS, and a SIGN OUT button.
- COVID-19 Section:** A sub-header "COVID-19" is followed by a link "WCO updates" (circled in red) and "Temporary export control measures" with an image of coronavirus particles.
- Message of the Secretary General:** A video player titled "Message of the Secretary General on the Coronavirus disease (COVID-2019)" showing the WCO Secretary General speaking. The video has "Watch later" and "Share" buttons.
- Highlights:** A section titled "Highlights" with a small image of a customs officer.



Response to COVID-19

- HS Classification reference for COVID-19 medical supplies
- List of contact points in Member Customs administrations (restricted access to the list)
- Members' best practices

Response to COVID-19

- Provide guidance to Customs administrations and cross border agencies to guide them as to how to better communicate on Customs facilitation measures for the importation of medicines and medical equipment
- Provide guidance to humanitarian operators as to how to direct their efforts, addressing questions the operators must ask themselves

3. Advocate for SMART borders for disaster relief with ASYREC:

- Secure
- Measurable
- Automated
- Risk Management based
- Technology Driven



3. Questions

- How to enhance our collaboration with existing platforms to avoid any duplication of efforts?
- What are your needs ?
- Your priority countries?





Contact Details	
Virginie Bohl UNOCHA, Geneva <u>bohl (at) un.org</u>	Eléonore de Malézieux UNOCHA, Geneva <u>eleonore.demalezieuxduhamel (at) un.org</u>